

Eniyud Community Forests

Community Information
Meeting



OCTOBER 10,
2024



Agenda

1. Introduction and Welcoming
2. ECF Financial Overview
3. Cut Control and Silviculture
4. Hell Raving Creek Wildfire
5. FESBC Funding and Project Status
6. Forest Operations Map
7. Meeting Wrap-Up





Introduction

Welcome – Tsi Del Del Community

Board of Directors

- Percy Guichon
- Magnus Satre
- Clayton John Charleyboy, RFT
- Clinton Webb
- Philippe Theriault, RPF
- Kelly Emke

Management

- Consus Management Ltd. – Michael Tomlinson, RPF PAg

Facilitator

- Management Plus



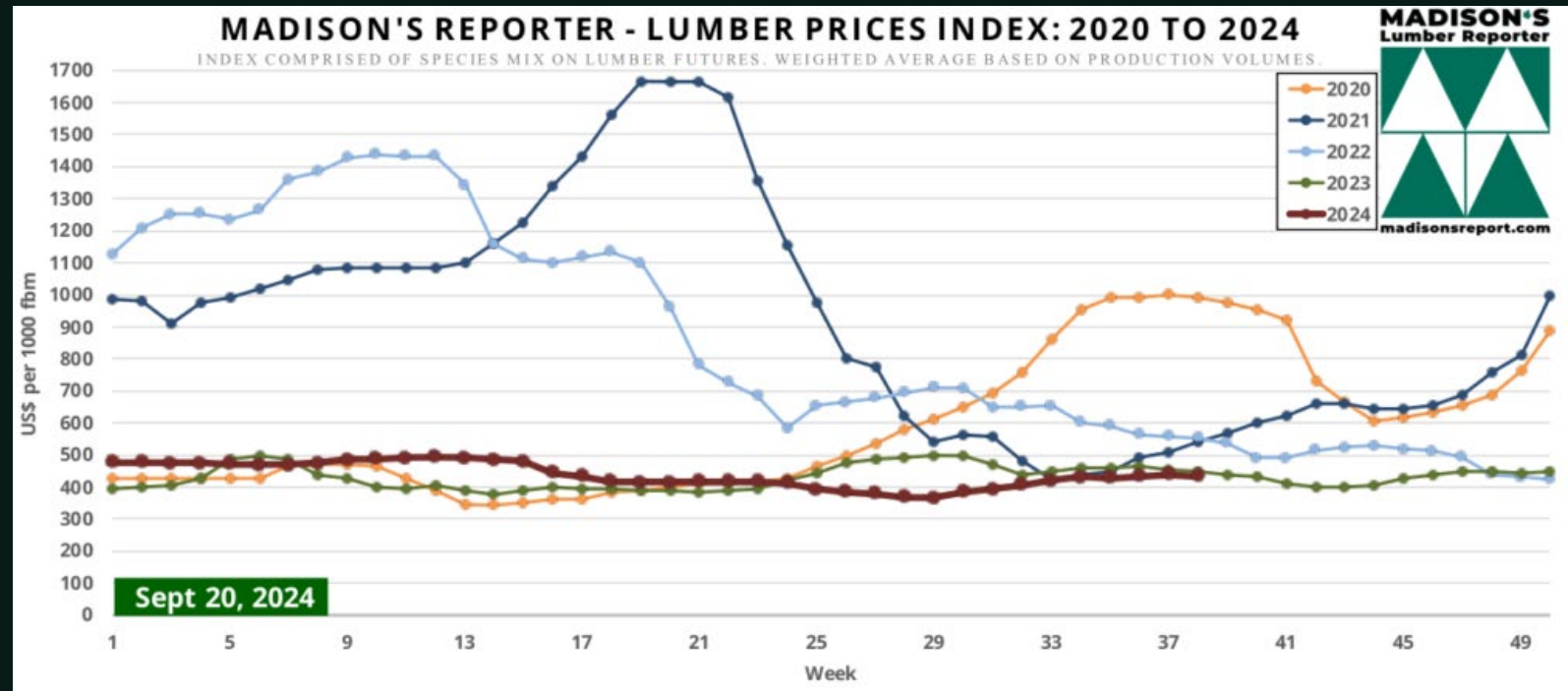


ECF Financials



Market Conditions

- 2023-24+ Low Commodity Price \$300-\$400/1000mFB
- Stud Market Very poor in 2024
- Lower Mill Purchase Prices
- Expensive Variables
- High Delivered Log Costs





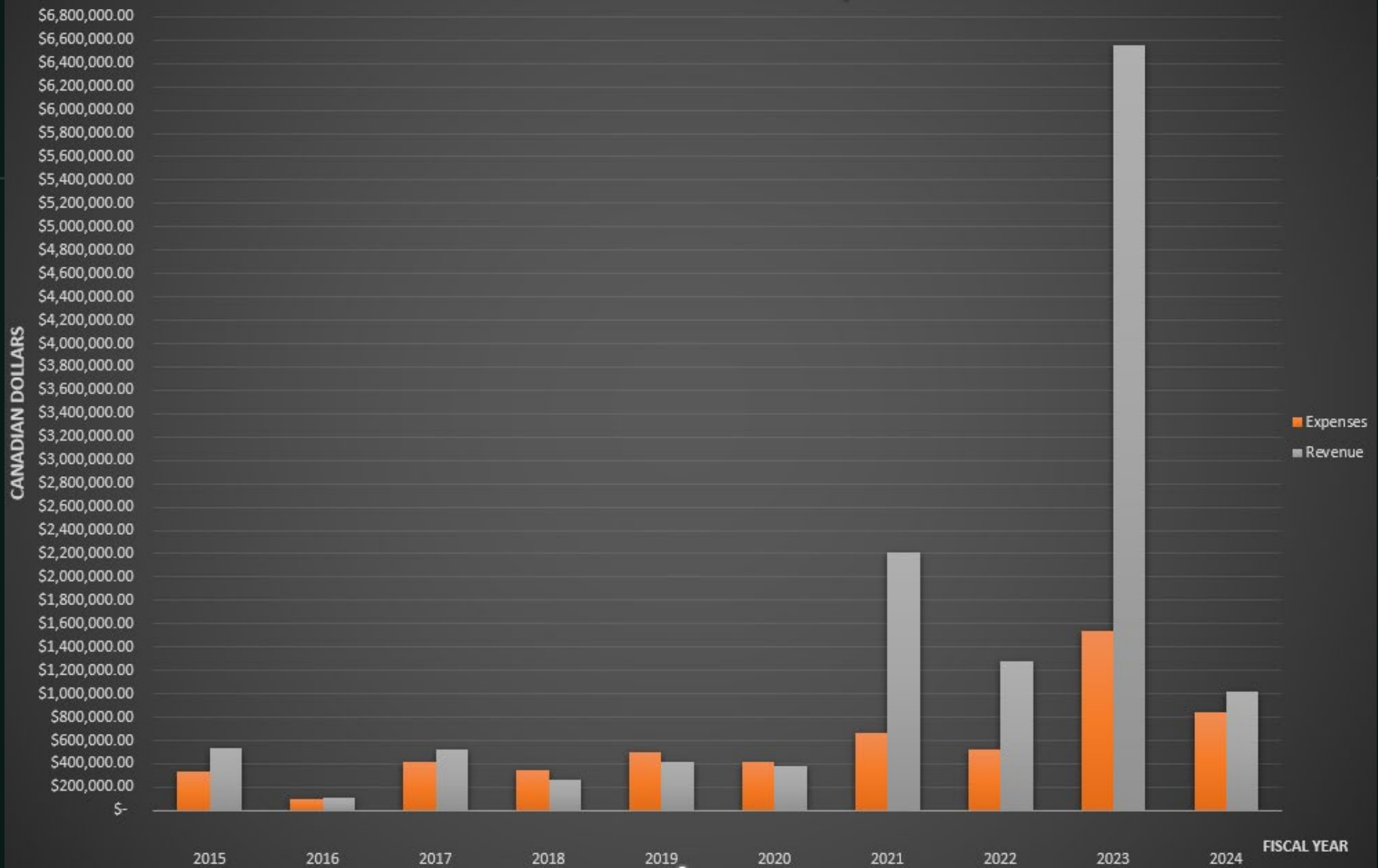
F23 and F24 Log Sales

- Record Sales Revenue in Fiscal 2023
 - 54,422m³ total delivery
- Lower Sales in Fiscal 2024
 - 23,233m³

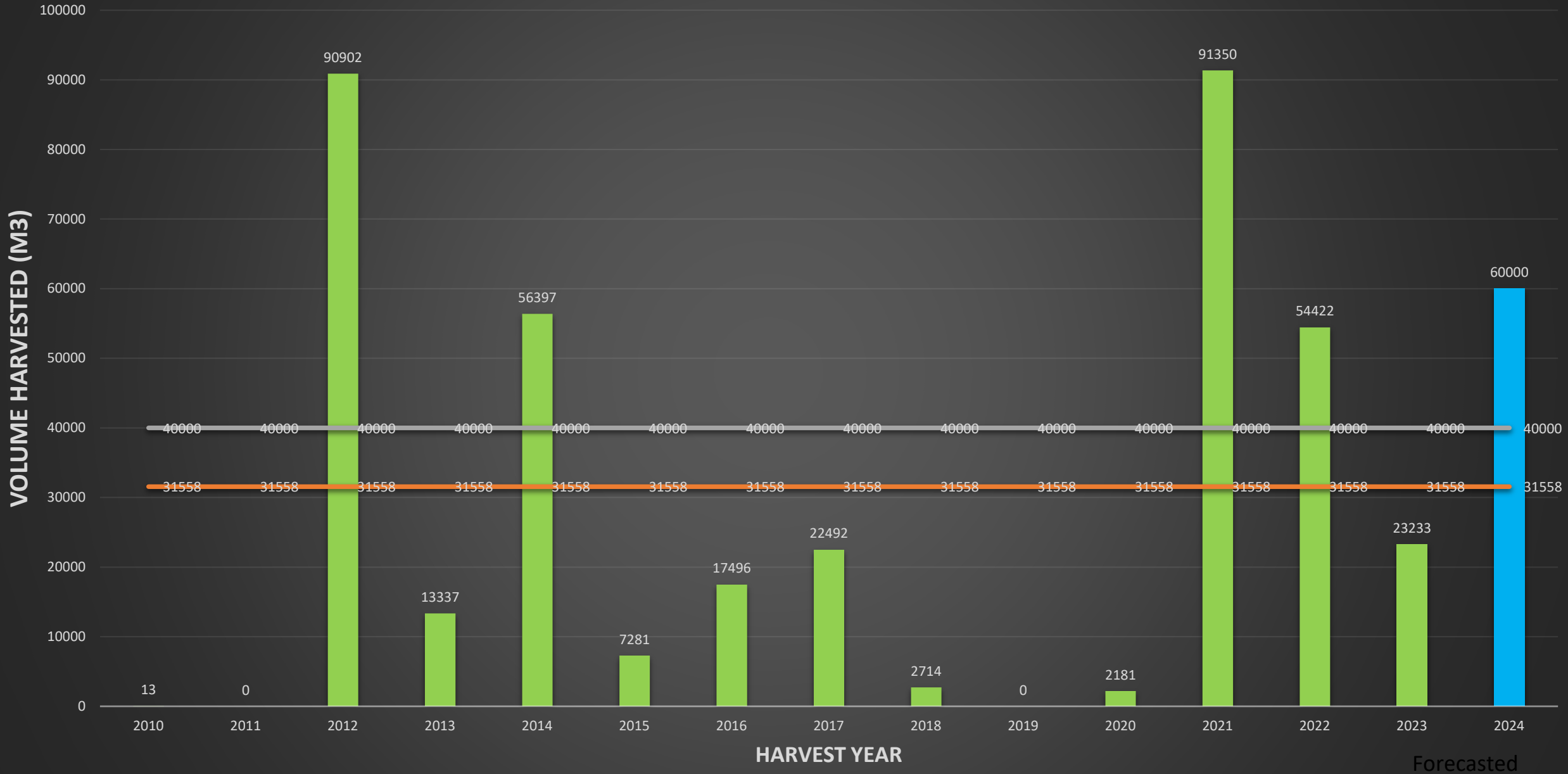


2023 saw significant revenues, which resulted in significant dividends.

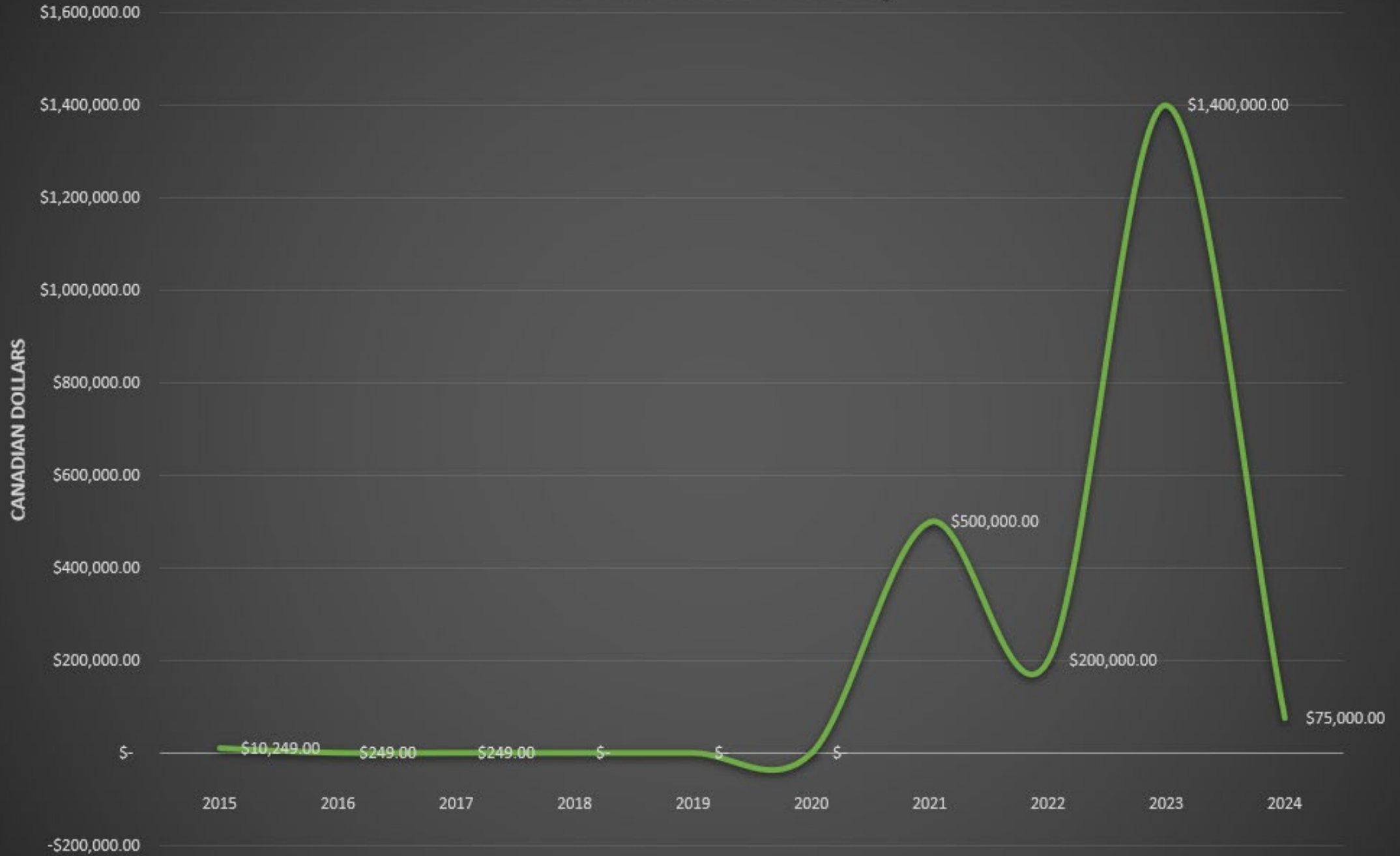
ECF Financial History



ECF Total Harvested m3/Year



ECF Financial History

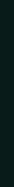




Questions on financials?



Cut Control Status





Annual Allowable Cut (AAC)

- Current Cut Control period
- Expires December 31, 2024
 - As of Calendar 2023
 - Total attributed volume 195,396 as of Sept 1 2024.



Annual Allowable Cut (AAC)

2007 TSR

- Cut Control Exceeded After 2024
 - Legally required to finish CP012
 - Push to salvage Fire Damage
- Expected total Cut Control
 - 236,000m³ -240,000m³

2016 TSR



Annual Allowable Cut (AAC)

2007 TSR

- Cut Control Period 2025-2029
 - Reduced in response to previous period
 - Maximum Cut volume
 - 160,000m³





Cut Control 2029

2007 TSR

- Review and Renew the Management Plan.
- New FLP Planning Regimes Etc.
 - Identify Community Values.
 - Identify Low Productivity Timber Sites.
 - Increased Community Input shareholders
 - Consultation with TSR specialists and Government for timing of next TSR.
 - Include New inventory methods using LiDAR



2016 TSR

Questions?



Reforestation and Silviculture

ECF continues to manage openings post-harvest.

- All harvested openings are reforested and managed to free growing
- Funds are set aside to ensure these activities are completed





Reforestation and Silviculture

- 2024 – Funded Planting on Forest For Tomorrow Blocks – 350,640 Trees
 - Obligation Planting - 196,200
 - Primarily on CP12 above eagle lake
- Silviculture Outlook 2025
 - 361,000 Trees sown for FFT Blocks.
 - 61,000 on Obligation Blocks
- Silviculture Outlook 2026
 - 467,000 on Obligation Blocks in Fire
 - ~1.1 Million on Middle Lake Fire (unharvested)





Hell Raving Creek Wildfire



Hell Raving Creek Wildfire

- Response Plan Developed and Shared with Community (Fall 2023)
- Salvage is a priority – Other green permits postponed
- Phased Approach to Rehabilitation
 - Review and Planning
 - Salvage
 - Rehabilitation
 - Forest Health Monitoring
 - Reforestation





Key Considerations

- Mule Deer Winter Range
- Mountain Goat Habitat
- Old Growth Management Areas
- Visual Quality
- Riparian and Hydrology
- Stakeholder Interests - Range





Salvage Plan

- Total Impact ~240ha
- Targeting High Burn Severity
- Estimated Volume
- Total Impact within the Wildfire
 - .5% of total fire area is salvageable
 - Access issues, rock and terrain
 - 1.5% of the total MDWR Unit, and only 4.9% of total burnt Mule Deer Winter Range



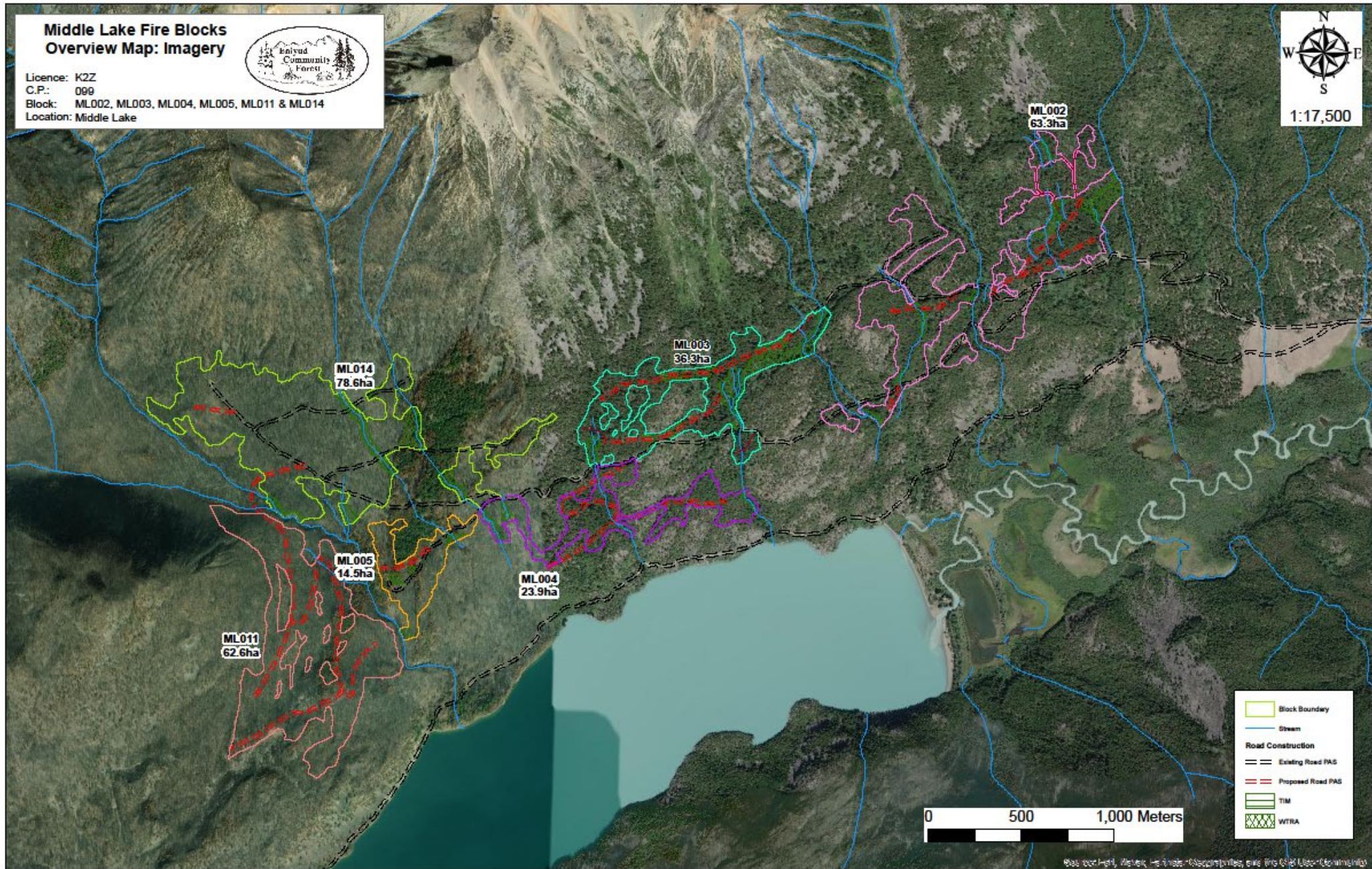
Middle Lake Fire Blocks Overview Map: Imagery



Licence: K2Z
C.P.: 099
Block: ML002, ML003, ML004, ML005, ML011 & ML014
Location: Middle Lake



1:17,500



ML011
62.6ha

ML005
14.5ha

ML014
78.6ha

ML003
36.3ha

ML004
23.9ha

ML002
63.3ha

- Block Boundary
- Stream
- Road Construction
 - Existing Road PAS
 - Proposed Road PAS
- TIM
- WTRA

0 500 1,000 Meters

Map not for sale, use, or reproduction without the prior written consent of the copyright holder.



Wildfire Rehabilitation

- Partnered with Local companies and First Nations
- Accessed NRCan 2 Billion Tree Funding
- Monumental Agreement and Project
- ~28Million in proposed activities over a span of 7 years
- Over 14 Million Seedlings likely to be planted
- Work opportunities for Local Contractors



**2BILLION
TREES**
**CALL FOR
PROPOSALS**
TREE PLANTING APPLICANT GUIDE



Fire Rehabilitation Work Progress

- Planning – Commenced Summer/Fall of 2024 and Ongoing
- Prescription and Unit Design – Winter/Spring 2025
- Access Planning
 - Heli Access – Pad Construction
 - Vehicle/Road
 - Foot/Quad
- Implementation
 - Reforestation



Forest Health Monitoring – Post Fire

- Follow up monitoring and Insect Control
 - Douglas Fir Beetle
 - Potential Pheromone Use
 - Push and Pull Tactics
- Potential Access to Gov't Funding for treatment of Fire Edges
 - Would begin next year



QUESTIONS?



Funding Programming



FESBC Projects Recap

- 1.5 Million in Provincial Funding
- Bluff Lake and Tatlayoko Roadways
- Designed for Access and Egress
- Designed using local input



Local Community Contractors

- Local Chilcotin Contractors
- ECF working with individual groups closely on projects to create new skillsets.
- Diversifying contractor base through creation of local employment.



FESBC Projects

- Bluff Lake Road is Currently being treated
 - Increasingly Narrow RoW, meandering
 - Approx. 50m on either side of the road.
 - Design is based on community feedback
 - Estimated Completion is March 2025.





FESBC Projects

- Tatlayoko Road
 - \$258,402.00 Awarded to commence work this winter
 - Conditional approval of \$868,000 for subsequent fiscal.
 - Dense, unmerchantable pine types
 - Problem Forest types from multiple perspectives
 - Challenging Treatments
 - Expensive
 - Correct equipment is limited
 - Looking to meet community requests



Questions



FRPA Amendments –Forest Operations Map



Forest Operations Map

- April 1, 2024 – New Legal Requirement through Bill 21
 - New public review process
 - Used for cutblocks and roads governed under a Forest Stewardship Plan





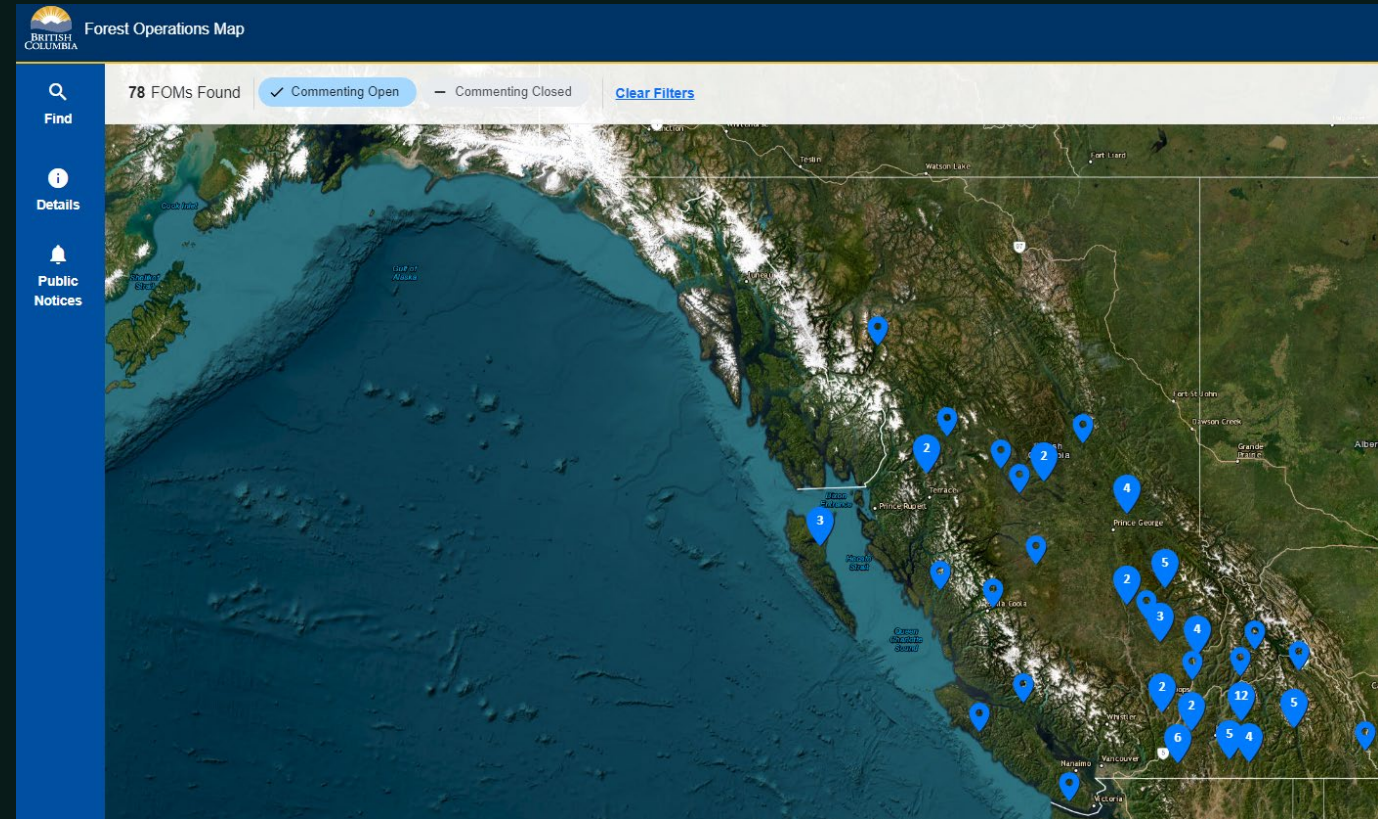
Forest Operations Map

- Key Components of the Map
 - The FSP Holder
 - The applicable FSP Number
 - General Geographic area with approximate roads and cutblocks
 - Proposed year of Harvest



Forest Operations Map

- How to view and comment (legal requirements)
 - FOM Maps are available at the License holders place of business.
 - Must publish public notice at least once in a newspaper
 - Also on publicly available website (no paywall) maintained by government or the FSP holder.





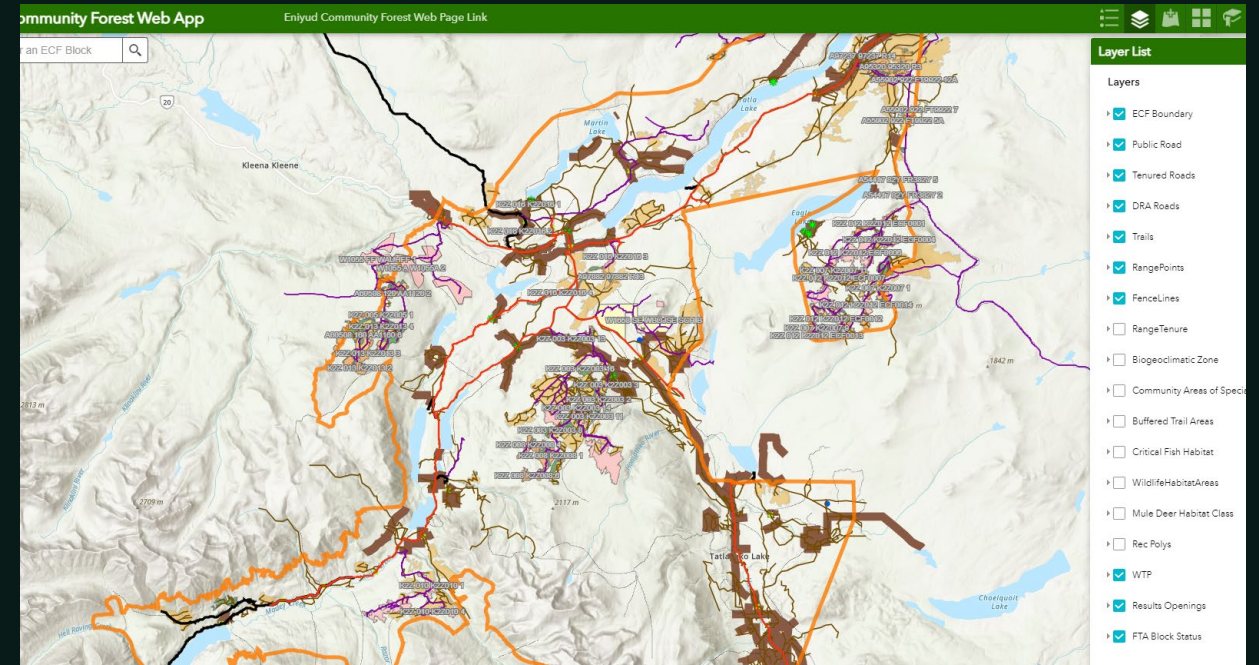
Forest Operations Map

- What this Means
 - 30 Days for Public review and Comment
 - Public Review Report is submitted to Government
 - 3 years of approval upon completion of the review period.



Forest Operations Map

- ECF Forest Operations Map
 - The FOM hard copy is intended to be located at a place of business where comments can be left.
 - Input on building a FOM Review Process:
 - Office of Managerial Team
 - Front of the ECF Website.
 - Online Mapping portal
 - In person open house.
 - Other?





Questions?

- Questions regarding FOM?
- Questions on posting of FOM?

www.eniyudcommunityforest.com

ECF Website

- Detailed information
- History and Partner Write-ups (provided by each partner)
- News and Alerts/Community Calendar
- Document Sharing
- Tendering or contract opportunities
- Fillable forms and contact forms.
- Communication with Management Team.
- FAQ section

The screenshot shows the homepage of the Eniyud Community Forest website. At the top, there is a navigation menu with links for HOME, LATEST NEWS, ABOUT US, OPERATIONS, EVENTS CALENDAR, PHOTO GALLERY, MEMBER AREA, and CONTACT US. The main header features the ECF logo and the tagline "SERVING THE SOCIAL, ENVIRONMENTAL AND ECONOMIC NEEDS OF OUR COMMUNITIES." Below this, a section titled "LATEST NEWS FROM THE ECF" displays three news items: "FESBC - Wildfire Reduction Treatments" (dated September 11, 2022), "Forests For Tomorrow" (dated September 6, 2022), and "BCCFA - Egress Treatments" (dated August 12, 2022). Each item includes a small image and a "Read More" link. A "Subscribe to the ECF" section follows, with a text prompt and an email input field. Below that is a "Our Vision & Mission" section with a paragraph of text. The "FROM THE GALLERY" section features a horizontal carousel of ten images showing various forest activities. The footer contains the ECF logo, copyright information for 2022, and links for Privacy Policy, Terms of Use, and Website by Enyud Studios.

Thank you

Eniyud Community
Forests

eniyudcf@gmail.com

[www.eniyudcommunity
forest.ca](http://www.eniyudcommunityforest.ca)

